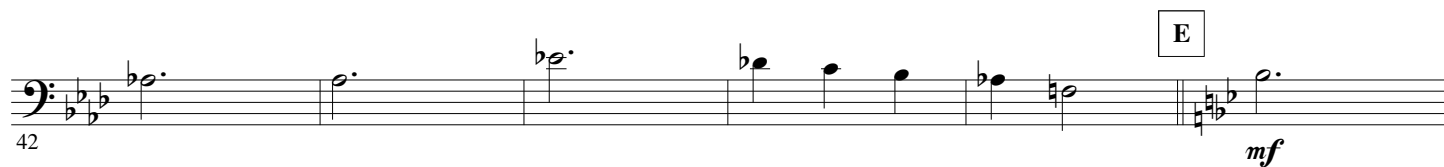
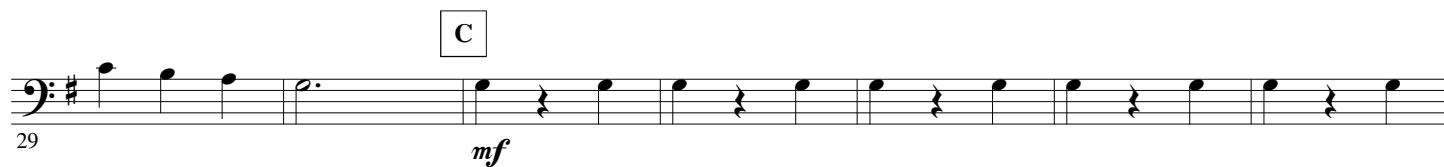
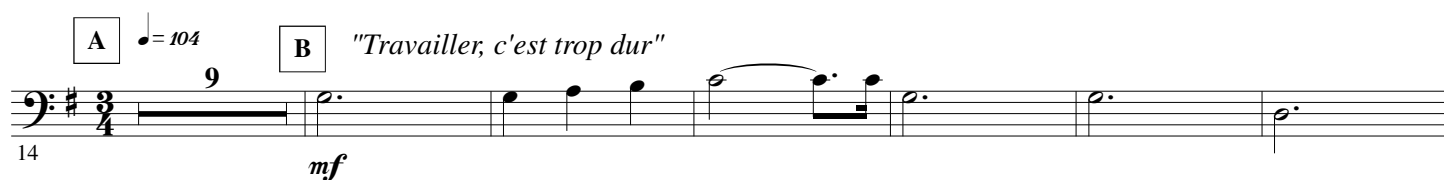
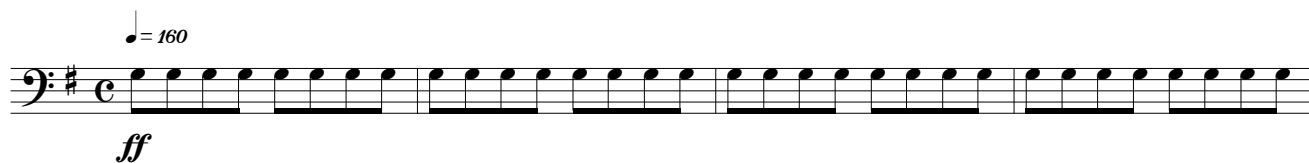
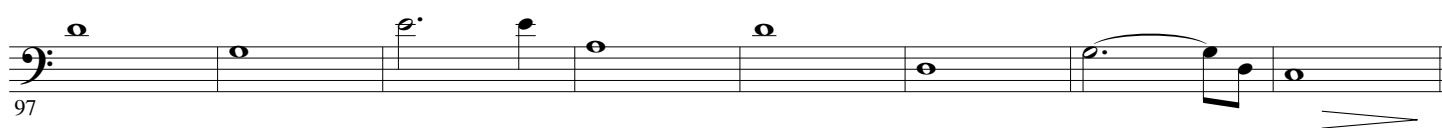
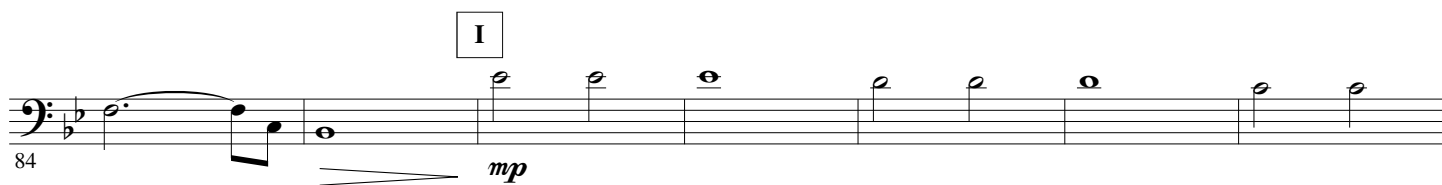
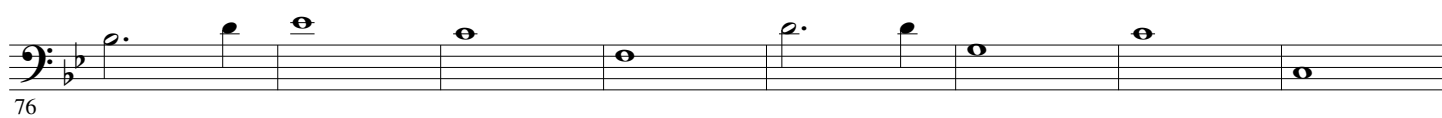
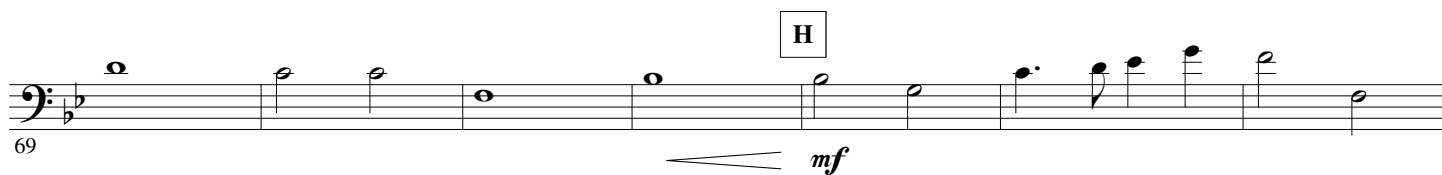
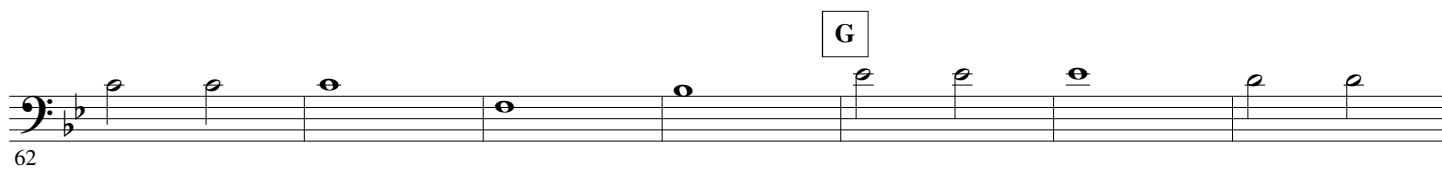
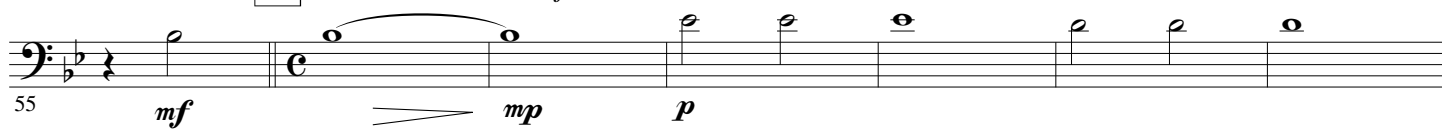
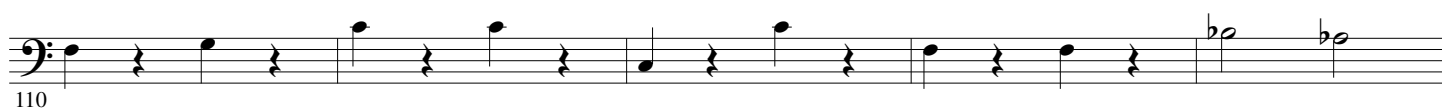


B \flat Bass

JULIEN CLERC

Arr. Maxime LEGAULOIS



F ♩ = 72 "Femmes... je vous aime"**K** ♩ = 100 "Ma préférence"**L**

120

M

mf

125

130

N

mf

135

O

$\text{♩} = 108$ "Hélène"

f

144

mf

149

P

154

159

mf

164

Q

169 *mf*

R

175 $\text{♩} = 160$

ff *f* *ff*

"Lili voulait aller danser"

182 *mf*

S

188

194

200

T

f

206

212

U

f

218

V

224

W

f

230

235

ff