

JULIEN CLERC

E \flat Horn 1

Arr. Maxime LEGAULOIS

♩ = 160

ff

Ritenu

A ♩ = 104 **B**

10 9 7

"Travailler, c'est trop dur"

C

30 **mf**

D

37 **mf**

E

44 **mf**

F ♩ = 72 **G** 10

52 **mf** **mf**

"Femmes... je vous aime"

68

H

73 **mf**

79

I

85 **mp**

J

92 *f*

97

K ♩ = 100 "Ma préférence" Cue Trb. 1

102 *mp*

108

L Play

113 *mf*

118

M

123 *mf*

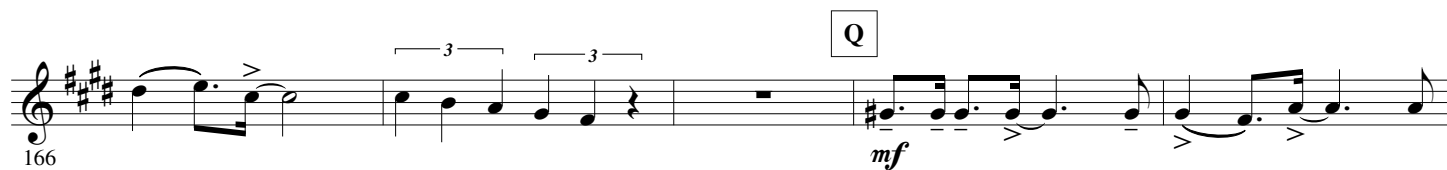
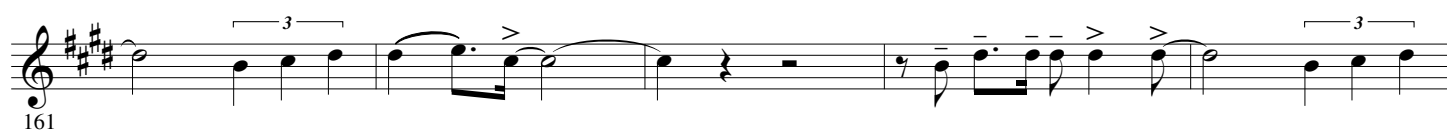
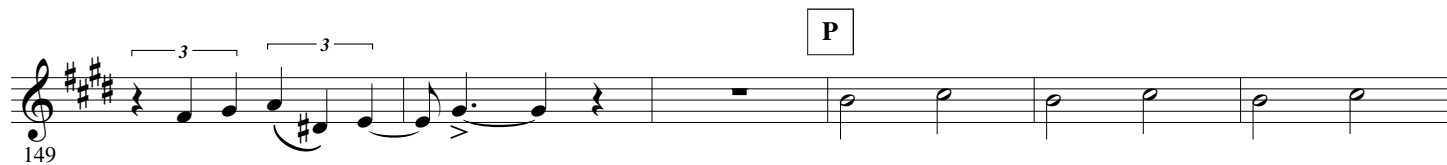
127

N

132 *mf*

O ♩ = 108 "Hélène"

137



198 T *mf*

204

210 U *f*

216

221 V

228 W *mf*

234 *ff*