

JULIEN CLERC

E \flat Horn 2

Arr. Maxime LEGAULOIS

♩ = 160

ff

Ritenuito

A ♩ = 104 **B**

10 9 7

"Travailler, c'est trop dur"

C

30 **mf**

D

37 **mf**

E

44 **mf**

50 **mf**

F ♩ = 72 **G** "Femmes... je vous aime"

10 56 **mf**

H

70 **mf**

75

81

Musical score for 'J' (Jazz). The score is written on a single staff with a treble clef and a key signature of one sharp (F#). The tempo is marked '92' and the dynamics are marked 'f' (forte). The melody consists of a series of eighth and quarter notes, with some notes beamed together. The score is divided into measures by vertical bar lines.

104 **K** $\text{♩} = 100$ "Ma préférence" Cue Trb. 2
 mp

[illegible]

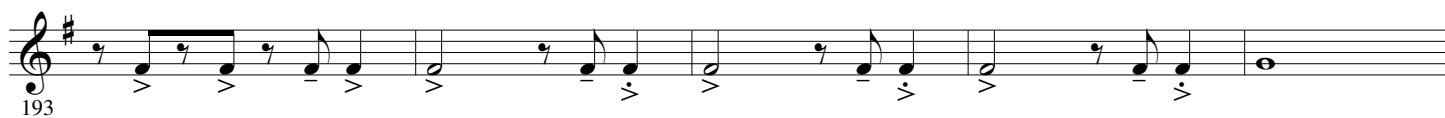
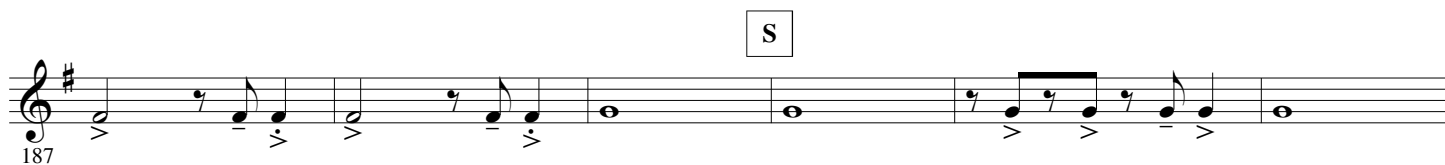
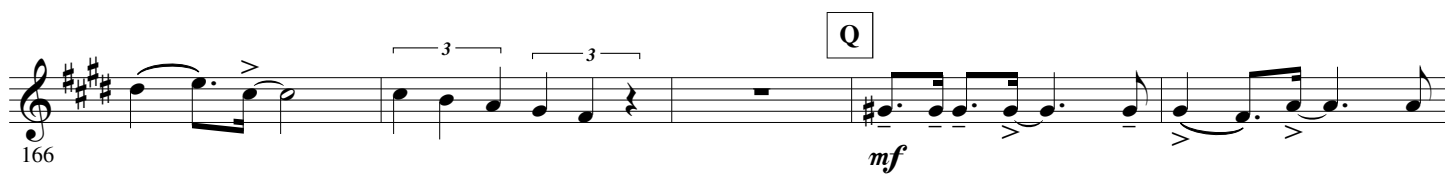
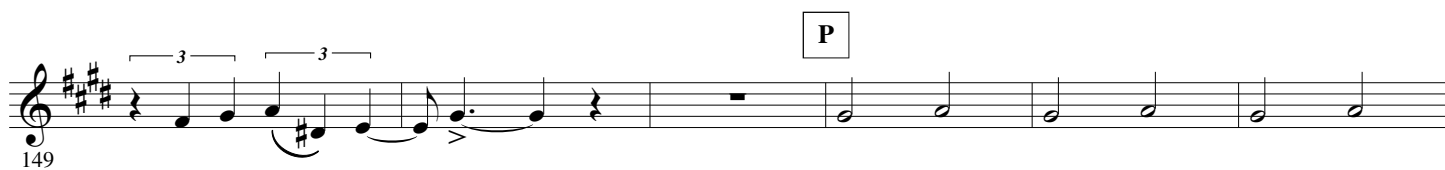
115 **L** *Play*

mf

126

Musical notation for the end of the piece, measures 126-128. The notation is on a single staff with a treble clef and a key signature of one sharp (F#). The melody consists of eighth and quarter notes. The piece concludes with a double bar line and a repeat sign.

[illegible][illegible]



198 T *mf*

205

211 U *f*

216

221 V

228 W *mf*

234 *ff*