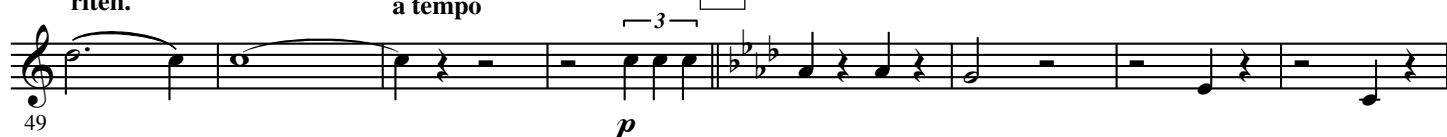


E♭ Horn 2**SPANISCHER MARSCH**

Johann STRAUSS Op. 433

Arranged by Yo KITANO

Allegretto quasi maestoso ♩ = 104 - 108**A****B****C****Ritard.****riten.****a tempo****D****E**

F

81 *mf*

89

G

97

104

H

111 *mf* Ritard.

118 *riten.* *a tempo*

I TRIO

125 *p*

133 *p*

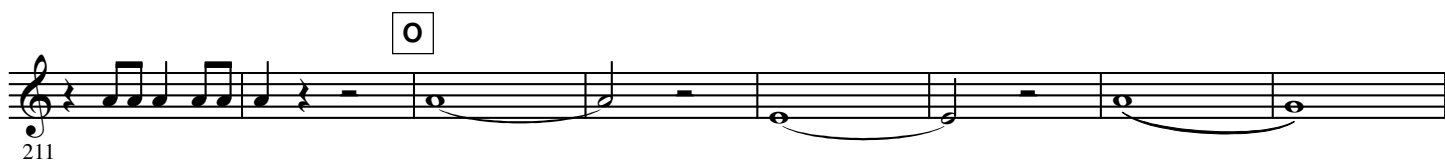
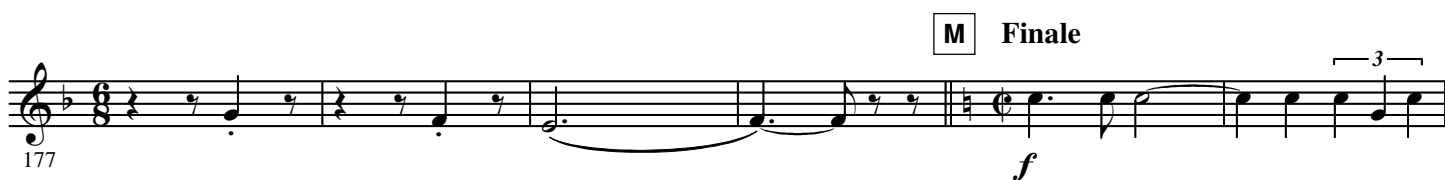
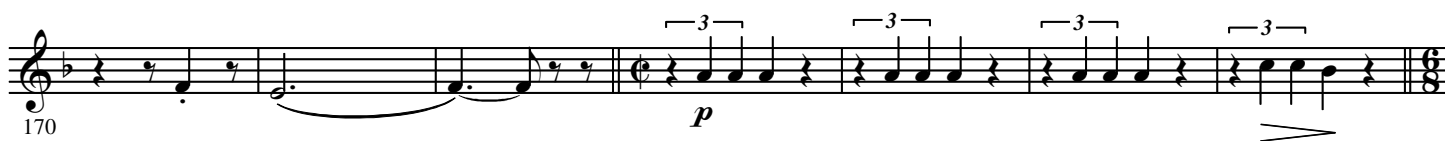
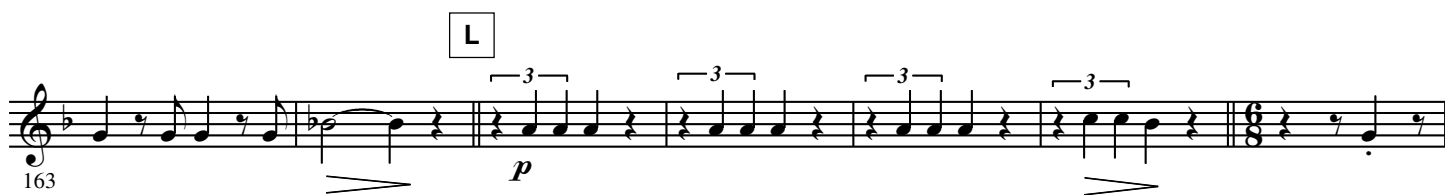
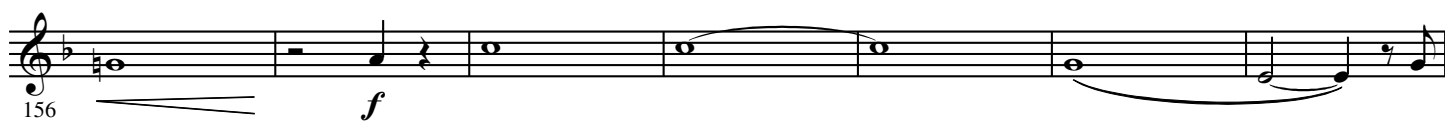
J

141 *f* *mf* *pp*

K

149 *mf*

3.

- E \flat Horn 2 -

219

225

231

237

243

250