

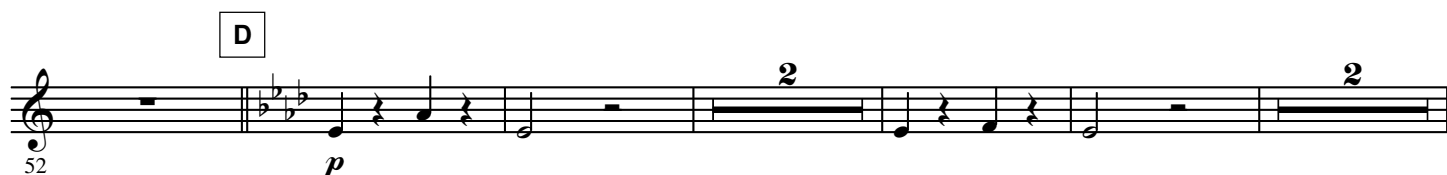
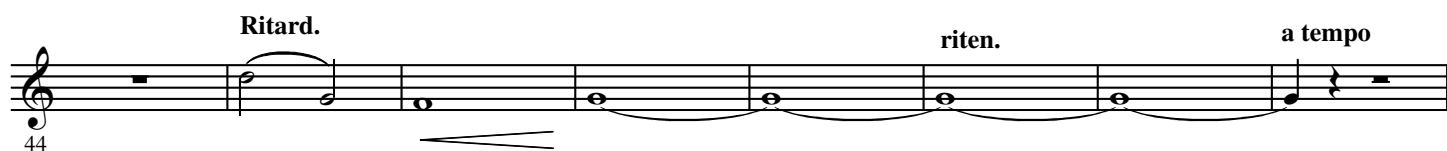
SPANISCHER MARSCH

E♭ Horn 3

Johann STRAUSS Op. 433

Arranged by Yo KITANO

Allegretto quasi maestoso $\text{♩} = 104 - 108$



2.

- E♭ Horn 3 -

61

2

E

f

68

75

3

F

81

mf

88

G

95

102

109

H

mf

3

Ritard.

116

riten.

a tempo

I TRIO

123

p

129

p

135

J

141

f

mf

2

K

149

pp

mf

156

f

L

163

p

169

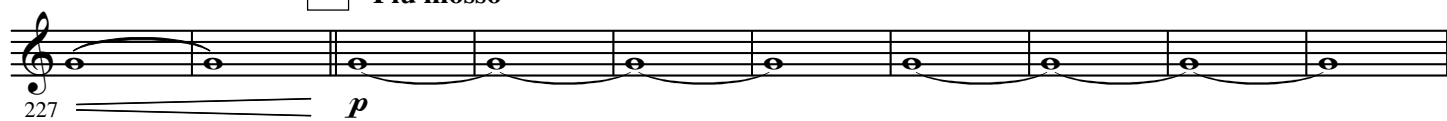
p

175

M Finale**N****O**

3

Ritard.

**P** Più mosso**Q**

Allargando

