

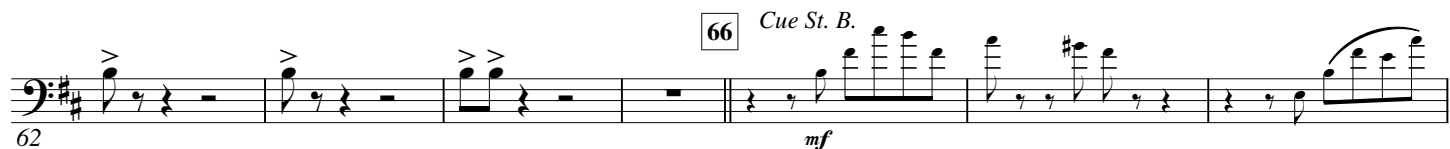
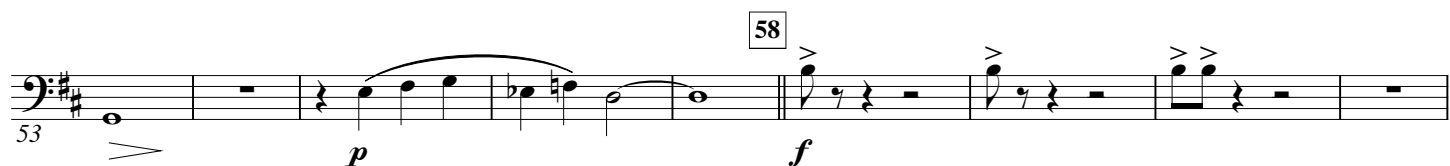
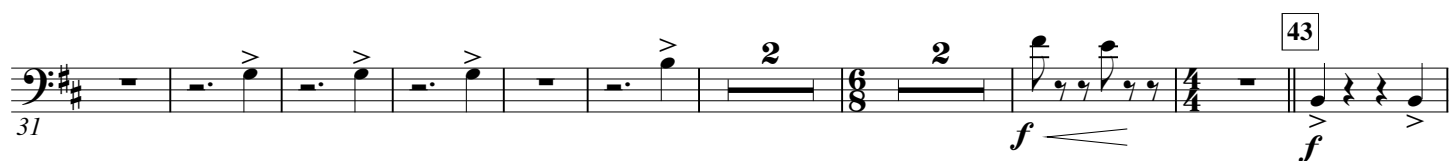
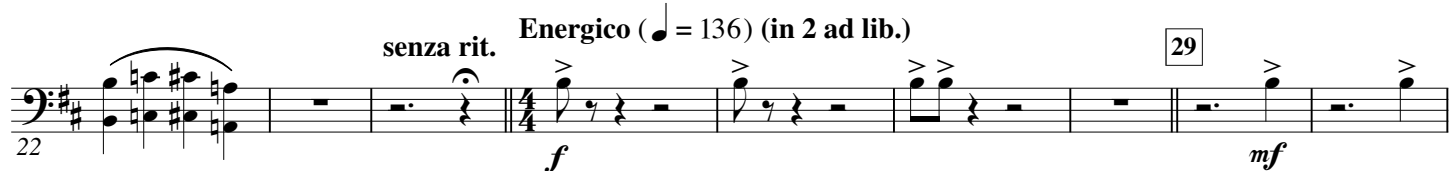
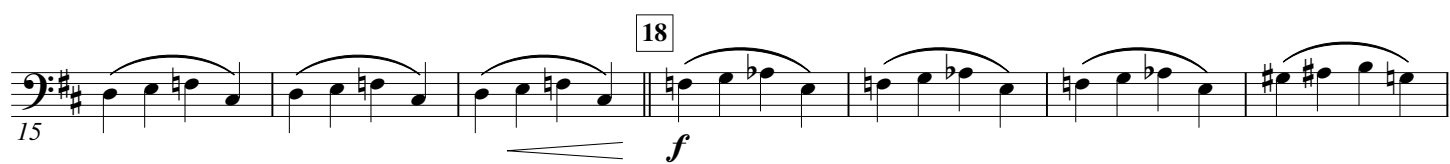
**B $\flat$  Bass**

# Les Cités obscures

d'après l'œuvre de François SCHUITEN

**Benoît CHANTRY**

Un poco largo (♩ = 66)



93 *mf*

101 *cresc. poco a poco*

116  $(\text{half note} = \text{half note})$   
113 *f* *dim.*

129 *molto rall.* *A tempo Affettuoso* ( $\text{half note} = 69$ )  
128 *mf* *p*

140 *cresc. poco a poco* *mf* *cresc. poco a poco*

Rit. 157 *A tempo*  
152 *p sub.* *mf*

171 *Energico* ( $\text{half note} = 136$ ) (in 2 ad lib.)  
168 *f*

185 *f*

191

201 *poco cresc.*

211 *dim.* *mf* *f*

219 *dim.* **222** *f* *dim.*

230 *mf* **232** *f* **242**

246 *cresc.* *f* **252**

256 *f* *dim.* **262**

270 *mf* **275** *f* *poco rit.*

**293** *A tempo* *mp* *cresc. poco a poco*

**Poco più mosso** (♩. = 108) **21** *mf* *poco f*

**333** *dim.* *mf*

345 *cresc. poco a poco*

**359** *mf sub.* **373** *ff* *f*

378 *f* *f* *cresc.* *ff*