

**B $\flat$  Bass**

# Les Cités obscures

d'après l'œuvre de François SCHUITEN

**Benoît CHANTRY**

**Un poco largo** (♩ = 66)

*mp*

8

*cresc.* *mf* *cresc. poco a poco*

18

15

*f*

**senza rit. Energico** (♩ = 136) (in 2 ad lib.)

22

*f* *mf*

29

31

*f*

43

44

53

*p* *f*

58

62

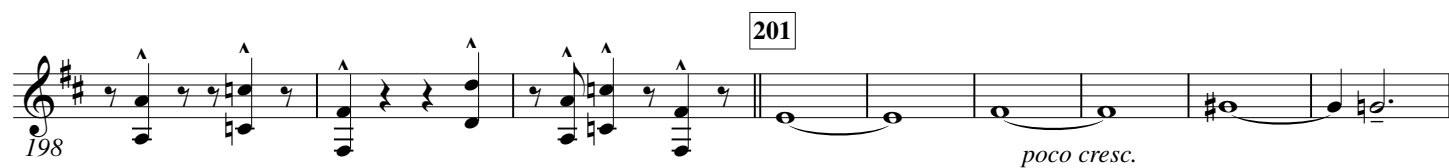
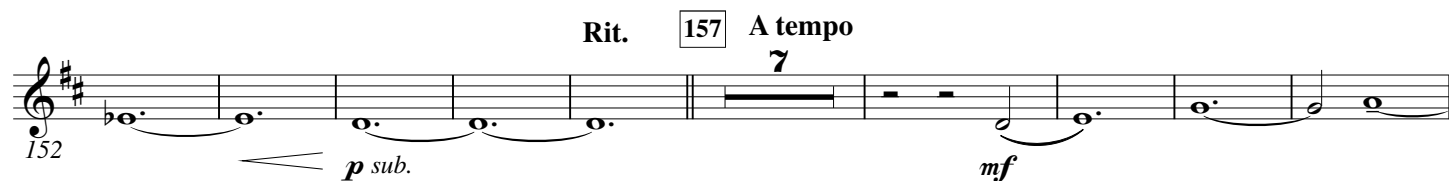
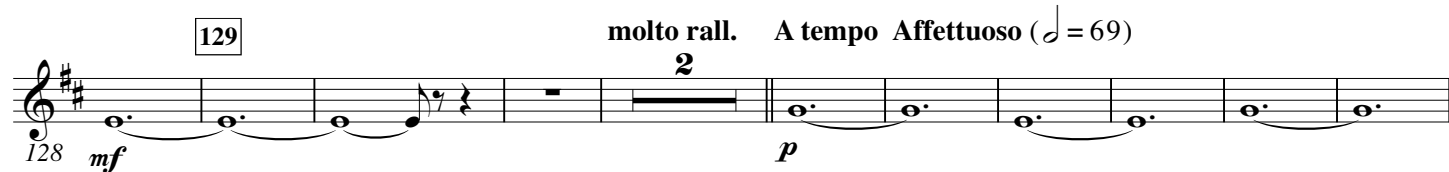
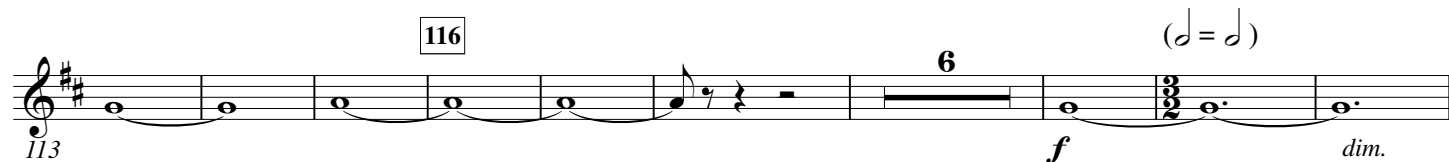
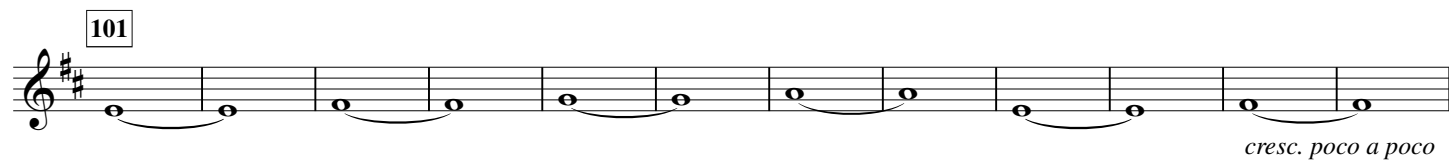
66 *Cue St. B.* *mf*

69

75

80 *Play* *mf*

11



219 *dim.* **222** *f* *dim.*

230 **232** *mf* **242** *f*

246 *cresc.* **252** *f*

256 **262** *f* *dim.*

270 **275** *mf* *f* *poco rit.*

**293** A tempo *mp* *cresc. poco a poco*

Poco più mosso (♩. = 108)

302 *mf* *poco f* **21**

**333** *dim.* *mf*

345 *cresc. poco a poco*

**359** *mf sub.* **373** *ff* *f*

378 *f* *f* *cresc.* *ff*