

E \flat Bass

Les Cités obscures

d'après l'œuvre de François SCHUITEN

Benoît CHANTRY

Un poco largo (♩ = 66)

mp

cresc. *mf* *cresc. poco a poco*

18

f

22 *f* *mf*

29

31 *f*

43

44

53 *p* *f*

58

62 *mf*

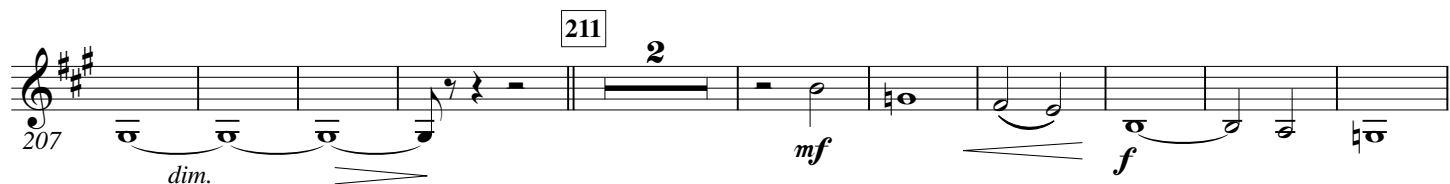
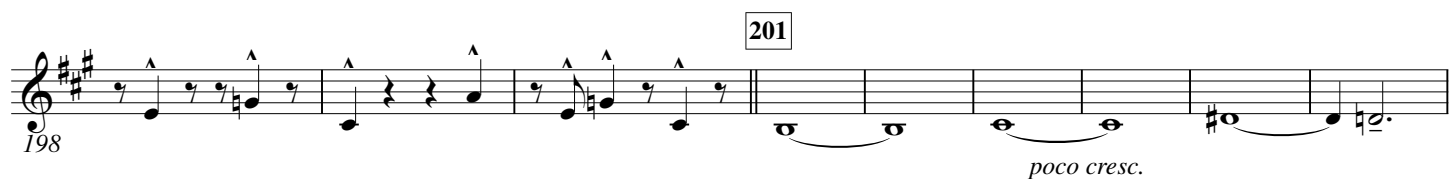
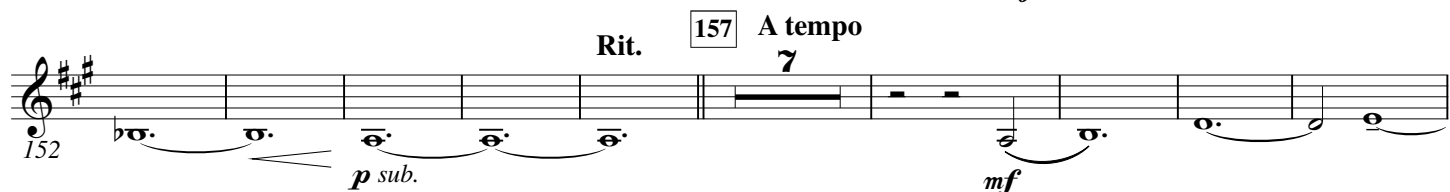
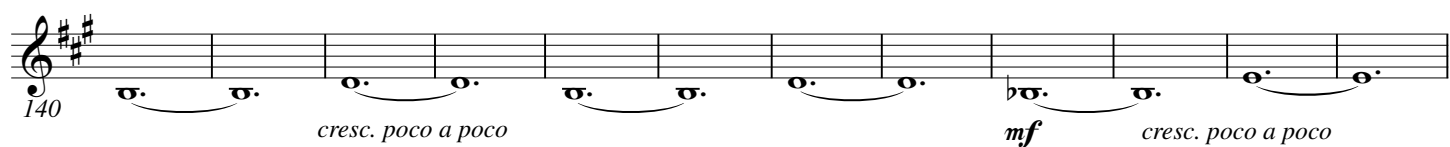
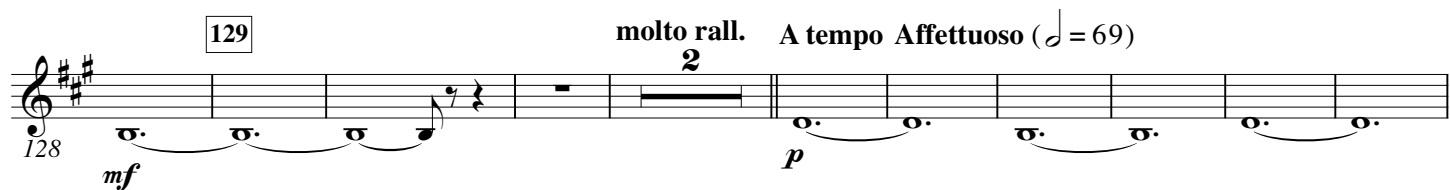
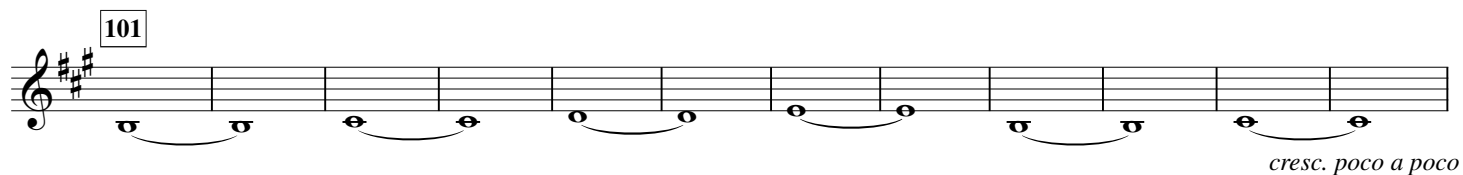
66 *Cue St. B.*

69

75 *mf*

80 *Play*

11



219 *dim.* **222** *f* *dim.*

230 *mf* **232** *f* **242**

246 *cresc.* *f* **252**

256 *f* *dim.* **262**

270 *mf* *f* **275** *poco rit.*

293 *mp* *cresc. poco a poco* **A tempo**

Poco più mosso ($\text{♩} = 108$)

302 *mf* *poco f* **21**

333 *dim.* *mf*

345 *cresc. poco a poco*

359 *mf sub.* *ff* *f* **373**

378 *f* *f* *cresc.* *ff*