

# ANDERS

for Alex and Tijmen

Bernard VAN BEURDEN

## B $\flat$ Trombone 1

### Adagio molto

Measures 1-10 of the B $\flat$  Trombone 1 part, Adagio molto. The score is in bass clef with a key signature of one sharp (F#). Measure 1 starts with a 4/4 time signature. Measures 2-4 are in 4/4. Measure 5 changes to 6/4. Measures 6-7 are in 6/4. Measure 8 changes to 7/4. Measure 9 is in 7/4. Measure 10 changes to 6/4. Dynamics include *pp* (pianissimo) and *p* (piano). There are triplets in measures 7 and 10.

### Allegro

### Adagio

Measures 11-23 of the B $\flat$  Trombone 1 part. Measures 11-13 are in 4/4 time, marked Allegro, with a *f* (forte) dynamic. Measures 14-16 are in 4/4 time, marked Adagio, with a *pp* (pianissimo) dynamic. Measures 17-19 are in 4/4 time, marked *f*. Measure 20 changes to 5/4 time. Measures 21-22 are in 4/4 time, marked *pp*. Measure 23 is in 2/4 time. Dynamics include *f* and *pp*. There are accents in measures 11 and 12, and a triplet in measure 20.

Measures 24-30 of the B $\flat$  Trombone 1 part. Measures 24-25 are in 2/4 time. Measures 26-27 are in 4/4 time. Measures 28-29 are in 5/4 time. Measure 30 changes to 6/4 time. Dynamics include *f* and *p*. There is a triplet in measure 28. The instruction "Str. mute" is written above measure 29.

Measures 31-40 of the B $\flat$  Trombone 1 part. Measures 31-32 are in 6/4 time. Measures 33-34 are in 4/4 time. Measures 35-36 are in 5/4 time. Measures 37-38 are in 4/4 time. Measures 39-40 are in 4/4 time. Dynamics include *mf* (mezzo-forte) and *f*. There is a triplet in measure 33. The instruction "Open" is written above measure 31.

Measures 41-50 of the B $\flat$  Trombone 1 part. Measures 41-42 are in 4/4 time. Measures 43-44 are in 4/4 time. Measures 45-46 are in 6/4 time. Measures 47-48 are in 4/4 time. Measures 49-50 are in 4/4 time. Dynamics include *pp* (pianissimo) and *mp* (mezzo-piano). There is a triplet in measure 41.

**Allegro vivace**

4+3+2

60



70



80

2+3+3



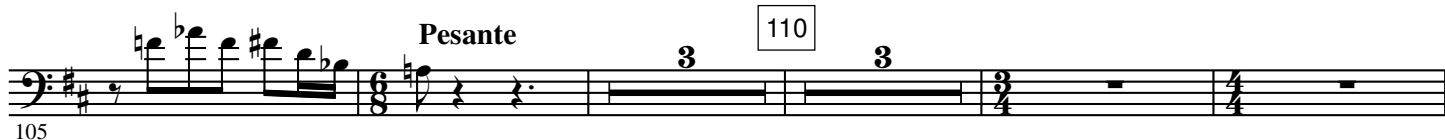
90

**Allegro vivace**

100

**Pesante**

110



**Molto vivace**  
*molto stacc.*

115 *ff* *ff*

120 *ffz* *ffz* *f* Flz. -----

125 *f*

130

137 *Andante*

142 *pp* *Adagio* 150 *pp*

160 *pp*