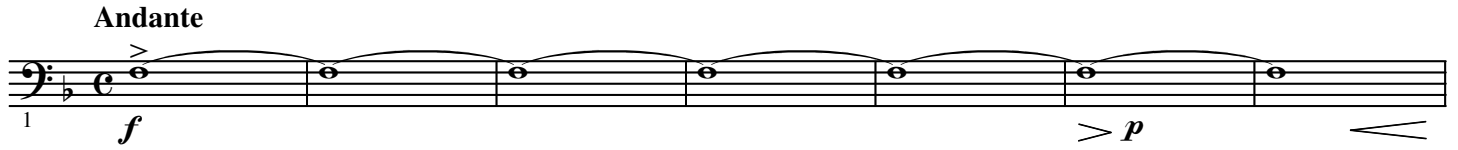


# Concerto for Trumpet

B $\flat$  Bass

Alexander ARUTIUNIAN

Arr. José SCHYNS



45 *mf* 5 *f ff*

51 *p* 6

58 *p*

64 *cresc.* 7

70 *f* 8

75 *p* *one* *Rit.* *all* 9 *Moderato assai* ♩ = ca 72 *pp* 6

86 *mf* *2 Players only* 10

92 *Rit.* *a tempo* 11

98 *all* 12

104 *sf* 13 *f*

110

Rit. 14 Meno mosso 11 one Cue St. B.

pp

Musical staff 110-111 in bass clef with key signature of two sharps (F# and C#). It begins with a series of eighth notes, followed by a measure with a half note and a quarter rest. A dynamic marking of *pp* (pianissimo) is present. A bracket indicates a repeat of the last measure. The staff ends with a measure containing a half note and a quarter rest.

126

15 Tempo I° = 132 - 144 all Play

5

*sf* *mf*

Musical staff 126-127 in bass clef with key signature of two sharps. It starts with a measure of a half note, followed by a double bar line. The key signature changes to one sharp (F#). The staff continues with a measure of a half note, followed by a measure of a half note and a quarter rest. A dynamic marking of *mf* (mezzo-forte) is present. The staff ends with a measure of a half note and a quarter rest.

136

16

2

*sf* *ff*

Musical staff 136-137 in bass clef with key signature of one sharp (F#). It begins with a measure of a half note, followed by a measure of a half note and a quarter rest. A dynamic marking of *sf* (sforzando) is present. The staff continues with a measure of a half note, followed by a measure of a half note and a quarter rest. A dynamic marking of *ff* (fortissimo) is present. The staff ends with a measure of a half note and a quarter rest.

145

17

*p* *sf* *f*

Musical staff 145-146 in bass clef with key signature of one sharp. It begins with a measure of a half note, followed by a measure of a half note and a quarter rest. A dynamic marking of *p* (piano) is present. The staff continues with a measure of a half note, followed by a measure of a half note and a quarter rest. A dynamic marking of *sf* (sforzando) is present. The staff ends with a measure of a half note and a quarter rest.

152

18

*f*

Musical staff 152-153 in bass clef with key signature of one sharp. It begins with a measure of a half note, followed by a measure of a half note and a quarter rest. A dynamic marking of *f* (forte) is present. The staff continues with a measure of a half note, followed by a measure of a half note and a quarter rest. The staff ends with a measure of a half note and a quarter rest.

159

19

2

*mf*

Musical staff 159-160 in bass clef with key signature of one sharp. It begins with a measure of a half note, followed by a measure of a half note and a quarter rest. A dynamic marking of *mf* (mezzo-forte) is present. The staff continues with a measure of a half note, followed by a measure of a half note and a quarter rest. The staff ends with a measure of a half note and a quarter rest.

166

20

*f*

Musical staff 166-167 in bass clef with key signature of one sharp. It begins with a measure of a half note, followed by a measure of a half note and a quarter rest. A dynamic marking of *f* (forte) is present. The staff continues with a measure of a half note, followed by a measure of a half note and a quarter rest. The staff ends with a measure of a half note and a quarter rest.

173

21

2

*p* *mf* *f*

Musical staff 173-174 in bass clef with key signature of one sharp. It begins with a measure of a half note, followed by a measure of a half note and a quarter rest. A dynamic marking of *p* (piano) is present. The staff continues with a measure of a half note, followed by a measure of a half note and a quarter rest. A dynamic marking of *mf* (mezzo-forte) is present. The staff ends with a measure of a half note and a quarter rest.

181

*ff*

2

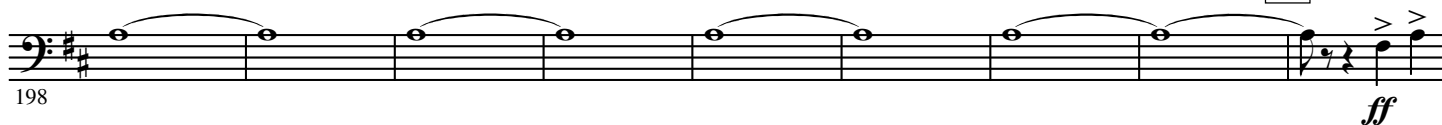
Musical staff 181-182 in bass clef with key signature of one sharp. It begins with a measure of a half note, followed by a measure of a half note and a quarter rest. A dynamic marking of *ff* (fortissimo) is present. The staff continues with a measure of a half note, followed by a measure of a half note and a quarter rest. The staff ends with a measure of a half note and a quarter rest.

22 Sostenuto

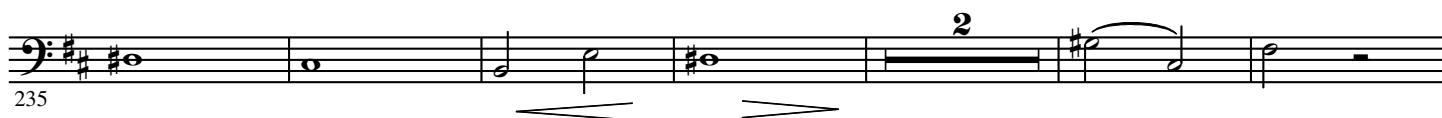
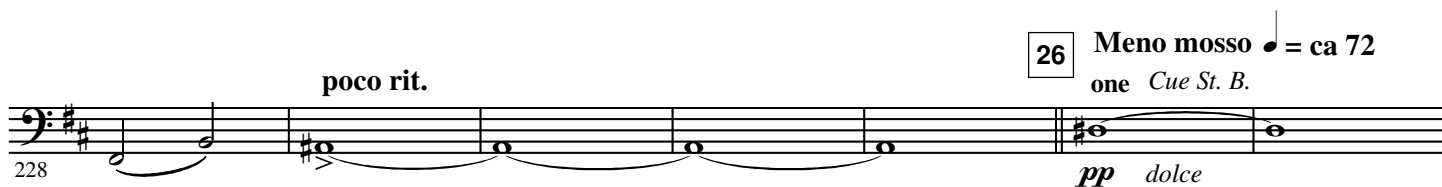
23



24



25



27

7

28

8

Rit.

29

a tempo

5



30 one Cue St. B.



31



Tempo I° = 132 - 144  
all Play

Rit.



284 *p* *sf* *sf* **32**

Staff 284-320: Bass clef, key of D major (two sharps). Measures 284-320. Dynamics: *p* (measures 284-319), *sf* (measures 320-321). Rehearsal mark 32 at measure 320.

291 *sf* *sf* *sf* *sf* *sf* *sf* **33**

Staff 291-326: Bass clef, key of D major. Measures 291-326. Dynamics: *sf* (measures 291-326). Rehearsal mark 33 at measure 326.

297 *sf* *sf* *sf* *sf* *sf* **34**

Staff 297-303: Bass clef, key of D major. Measures 297-303. Dynamics: *sf* (measures 297-303). Rehearsal mark 34 at measure 303.

304 *sf* *sf* *ff* **35**

Staff 304-309: Bass clef, key of D major. Measures 304-309. Dynamics: *sf* (measures 304-308), *ff* (measure 309). Rehearsal mark 35 at measure 309.

310

Staff 310-315: Bass clef, key of D major. Measures 310-315. Dynamics: *sf* (measures 310-315).

316 *mf* **36**

Staff 316-320: Bass clef, key of D major. Measures 316-320. Dynamics: *mf* (measures 316-320). Rehearsal mark 36 at measure 320.

321 *mf*

Staff 321-325: Bass clef, key of D major. Measures 321-325. Dynamics: *mf* (measures 321-325).

326 *p* *mf* **37**

Staff 326-330: Bass clef, key of D major. Measures 326-330. Dynamics: *p* (measures 326-329), *mf* (measure 330). Rehearsal mark 37 at measure 330.

331 *f* **38**

Staff 331-335: Bass clef, key of D major. Measures 331-335. Dynamics: *f* (measures 331-335). Rehearsal mark 38 at measure 335.

336

Staff 336-340: Bass clef, key of D major. Measures 336-340. Dynamics: *f* (measures 336-340).

39 one Cue St. B.



40 all



41



42 Cadenza



43

