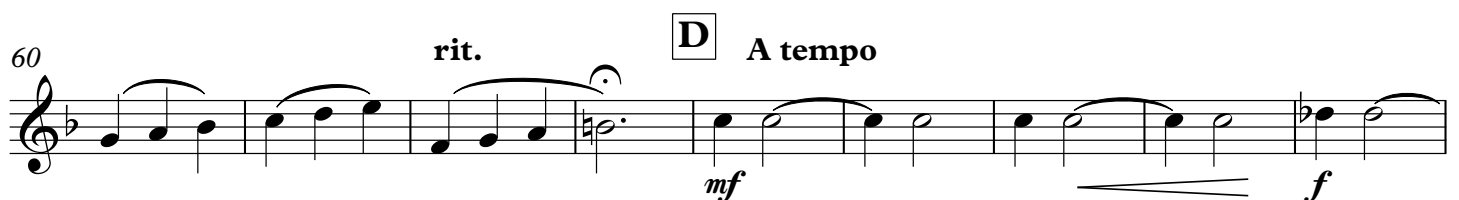
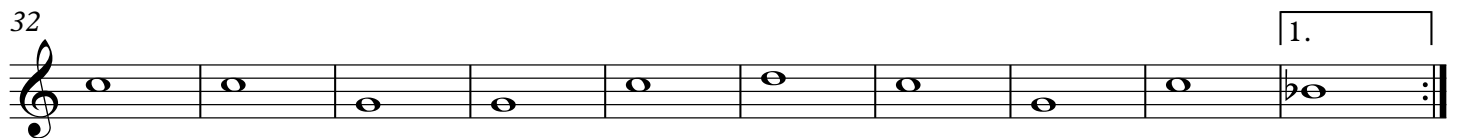
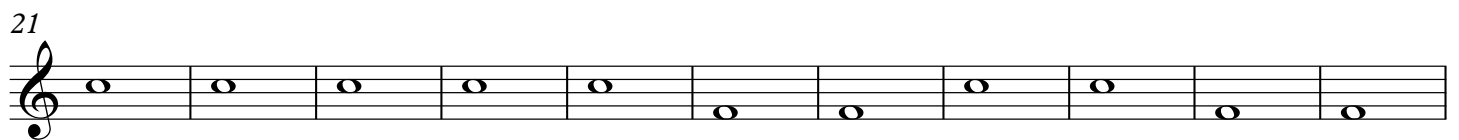
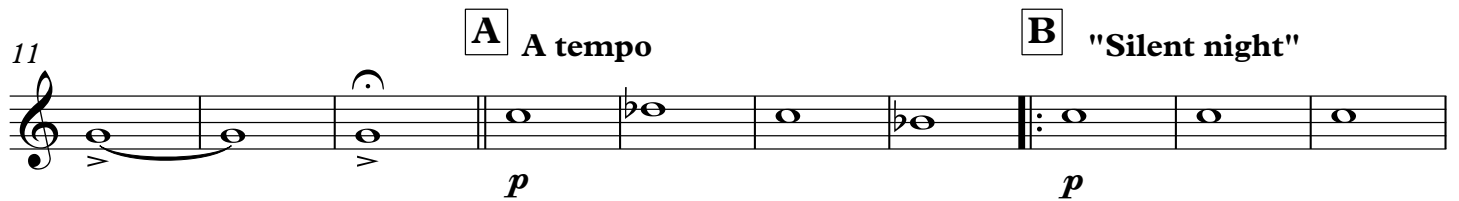
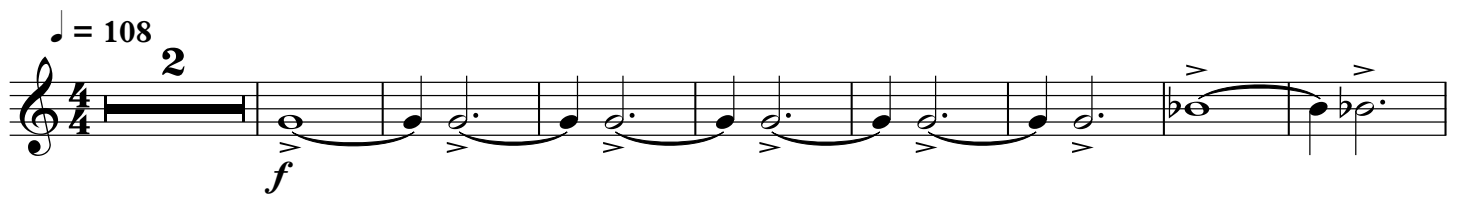


Two carols for band

Tuba in B \flat

arr. André WAIGNEIN



Tuba in B \flat **E** "O little town of Bethlehem"

69 $\text{♩} = 112$

fp *f*

3

3

78

4

3

1. 2.

91 **G**

7

H

f

I

mf

104

111

J play 4x

3

120

1. 2. 3. 4.

K

ff *f*

1.

126

2.

L

mf

133

M $\text{♩} = \text{♩}$

ff

138

3