

Commissioned by HAFABRA Music and dedicated to Frank De Vyyst

# DIVERGENCES

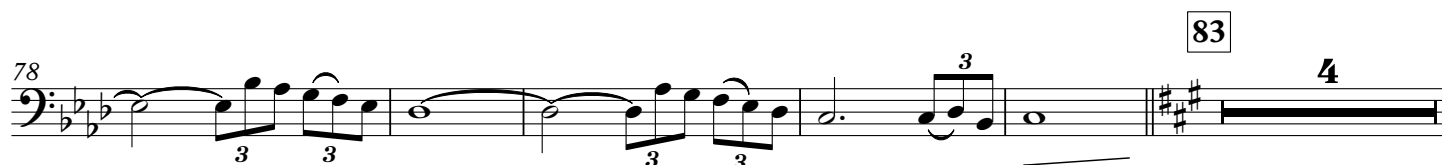
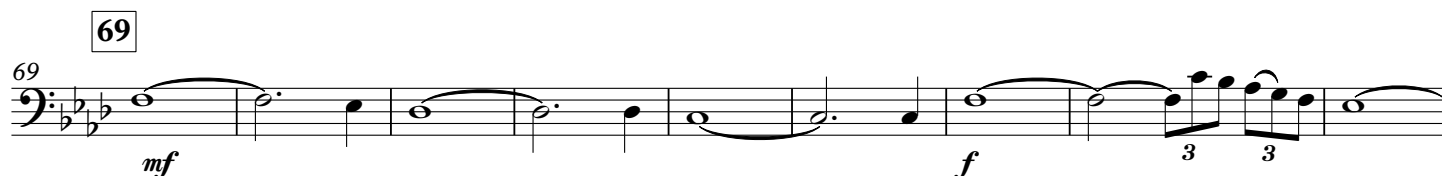
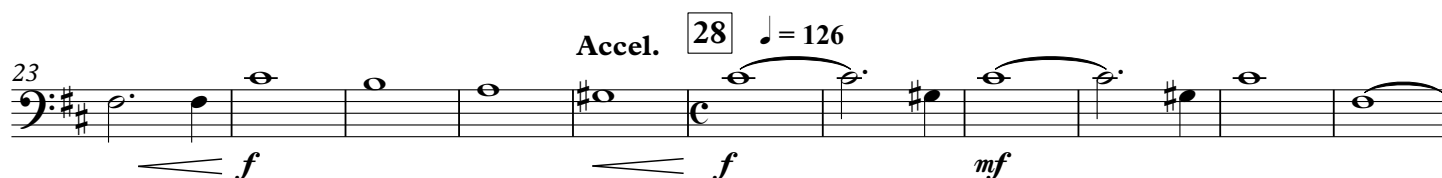
for symphonic band

Tuba in B $\flat$  B C

André WAIGNEIN

$\text{♩} = 52$

11



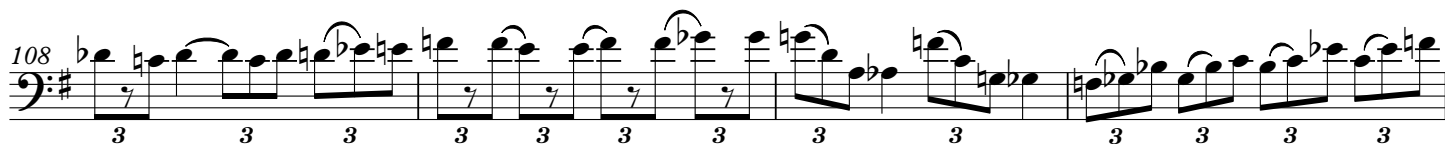
91



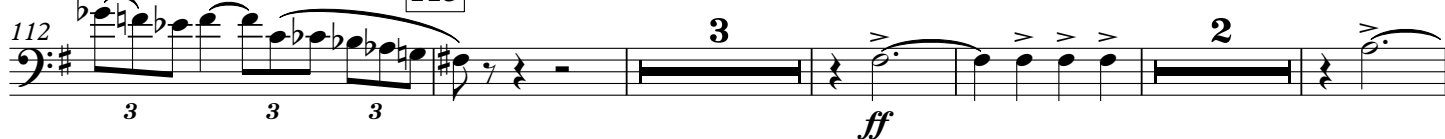
97



107



113



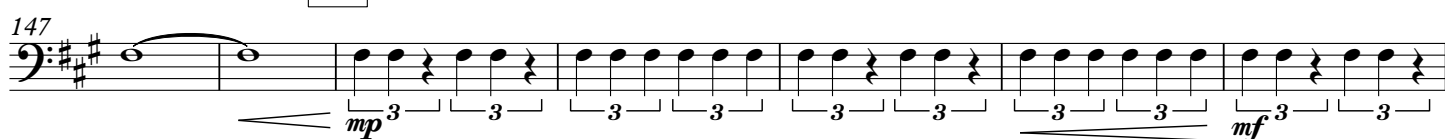
123



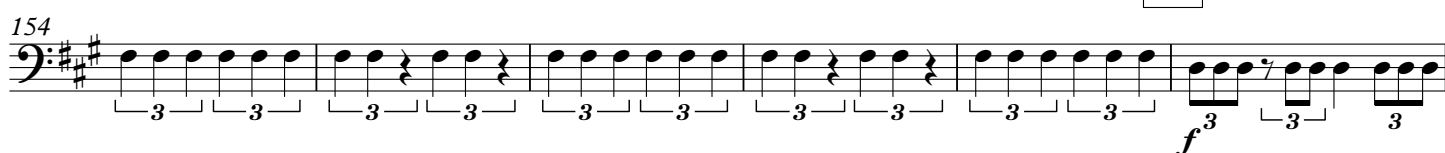
133



149



159



160 *fp* *f* 3 3

171 2 6 *f*

184 Ben rit. 187  $\text{♩} = 84$  *mf* *p*

197 196

213 210 *mf*

222 222 *mp* *p*

Poco accel. 236  $\text{♩} = 96$  244 *p* *mf* *mf*

252  $\text{♩} = 100$  247 *ff*

264 258 6 *mf*

275 285  $\text{♩} = 132$  8 *mf* *fp*

293



310



320



Ben rit.

331

♩ = 88



343



351

Istesso tempo

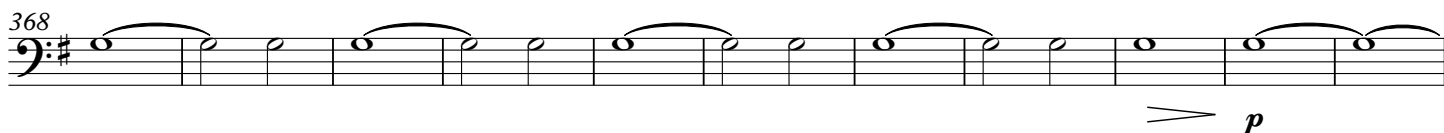
Ben rit.



358

♩ = 52

366



381

385

