

# CARIBBEAN SYMPHONETTE

(1<sup>st</sup> Symphonette for Symphonic Band)

Franco Cesarini  
Op. 51

E $\flat$  TUBA

Allegro giusto

I. Bachata

The musical score for the E $\flat$  Tuba part is written in bass clef with a key signature of two sharps (D major). It begins with a 3-measure rest followed by a quarter note G $\sharp$ 2, then a 4-measure rest followed by a quarter note G $\sharp$ 2. The first system includes dynamic markings *sffz* and *ff*. The second system starts at measure 12 with a series of quarter notes G $\sharp$ 2, marked *p*. The third system starts at measure 16 with quarter notes G $\sharp$ 2, marked *mf* and *p*. The fourth system starts at measure 24 with quarter notes G $\sharp$ 2, marked *mf* and *p*. The fifth system starts at measure 32 with quarter notes G $\sharp$ 2, marked *mf* and *p*, and includes the instruction "one player only". The sixth system starts at measure 41 with quarter notes G $\sharp$ 2, marked *mp*, and includes the instruction "all players". The seventh system starts at measure 49 with quarter notes G $\sharp$ 2, marked *mf*. The eighth system starts at measure 57 with quarter notes G $\sharp$ 2, marked *mp*, and includes a 4-measure rest and a 5-measure rest. The score concludes with a 5-measure rest.

72

Lo stesso tempo

*mp*  $\text{p}$

80

*mf*

88

4

one player only

*mf*

96 all players

*mf* *cresc.* *mf*

*f* *cresc.* *ff*

106

*mf*

116

8

124

*ff* *mf* *cresc.*

*f* *cresc.*

134

*ff* *f*

142 **Tempo I $^{\circ}$**

4

*cresc.* *ff* *sfz*

152

*sfz* *ff*

158

*p* *mf*

166 one player only

*p* >

all players

175

*mp* *f*

> *mf*

183

*mf*

191 one player only

*p* >

all players

199

5

*mp*

205 **Poco meno**

*mp* *p*

*rall.* *p*

**II. Salsa**

218 **Allegretto senza fretta** 230

11 4 (Double Bass) *mp*

242 (play) *mp*

250 *mp*

258

6 266 *mf*

274 *ff* *mp*

282 11 294 *mf*

*f*

306

*ff* *mf*

Detailed description: This staff contains measures 306 through 313. It begins with a dynamic of *ff* and changes to *mf* at measure 308. The music features eighth and sixteenth notes with various rests.

(Double Bass)

314 7 *a tempo*

*mp* *f*

Detailed description: This staff contains measures 314 through 317. Measure 314 is marked *mp*. Measure 315 has a fermata with a '7' above it. Measure 317 is marked *f* and includes a triplet of eighth notes. The tempo marking *a tempo* is placed above measure 317.

322

*f*

Detailed description: This staff contains measures 322 through 329. The dynamic *f* is marked at measure 327. The music consists of eighth and sixteenth notes.

330

*ff*

Detailed description: This staff contains measures 330 through 337. The dynamic *ff* is marked at measure 333. The music features eighth and sixteenth notes.

338

*mf*

Detailed description: This staff contains measures 338 through 345. The dynamic *mf* is marked at measure 341. The music consists of eighth and sixteenth notes.

(Double Bass)

346 12 358 (play) *sffp*

*mp*

Detailed description: This staff contains measures 346 through 357. Measure 346 is marked *mp*. Measure 347 has a fermata with a '12' above it. Measure 358 is marked *sffp* and includes a triplet of eighth notes. The instruction '(play)' is written above measure 358.

362 Poco meno

*ff* *mp* *p*

Detailed description: This staff contains measures 362 through 371. Measure 362 is marked *ff*, measure 364 is marked *mp*, and measure 366 is marked *p*. The tempo marking *Poco meno* is placed above measure 362. The music features half notes and rests.

Detailed description: This staff contains measures 372 through 377. It features a long melodic line with half notes.

372 *poco rall.*

*p*

Detailed description: This staff contains measures 372 through 377. The tempo marking *poco rall.* is placed above measure 372. The dynamic *p* is marked at measure 372. The music features a long melodic line with half notes. The key signature changes to two sharps and the time signature to 2/4 at the end of the staff.

378 Vivace

III. Merengue

7

Detailed description: This staff contains measures 378 through 384. Measure 378 is marked *Vivace*. The time signature is 2/4. Measure 379 has a fermata with a '7' above it. The music consists of eighth notes and rests.

CARIBBEAN SYMPHONETTE - 6 | E $\flat$  TUBA

386

*mf* *f*

394

402

*f*

410

*ff* *mf*

418

*mf*

426

*f*

434

*ff* *mf*

442

*f*

451

*f*

459

*f*

467



475



483 **Quasi Habanera**  
two players



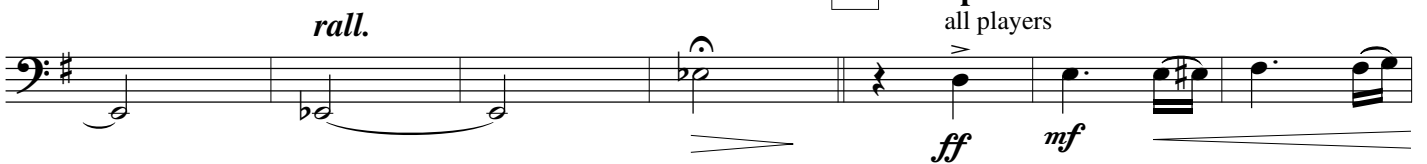
491



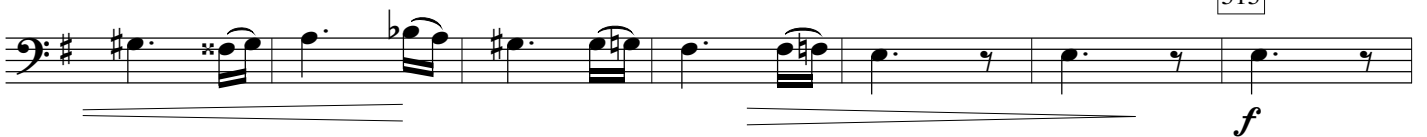
499 **Più lento**  
one player only



506 **Tempo I**  
all players



515



523

