

72

Lo stesso tempo



80



88

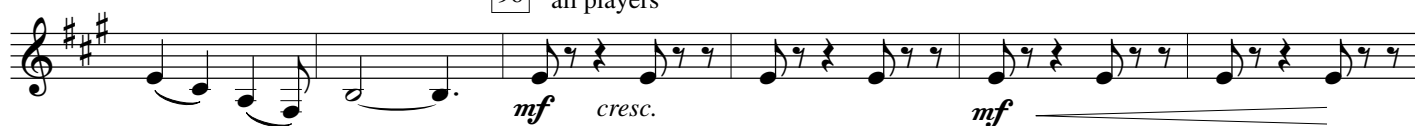
4

one player only



96

all players



106



116

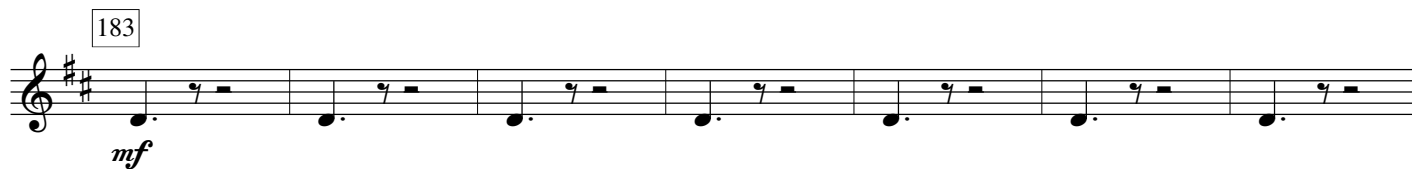
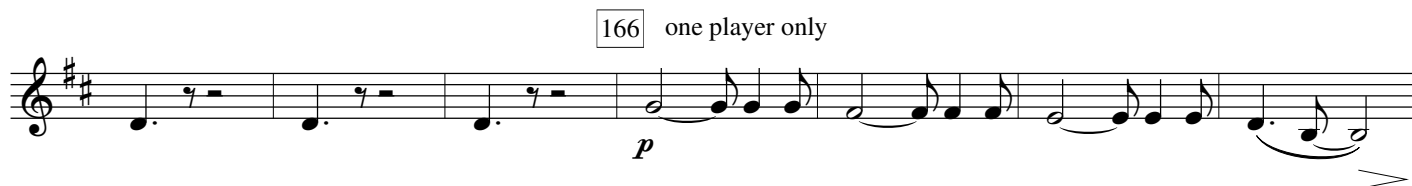
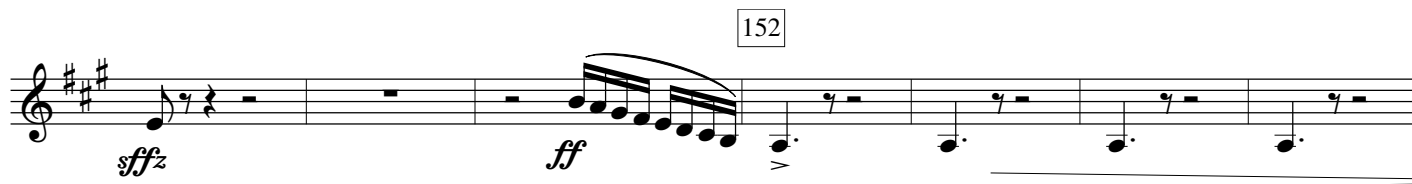
8

124



134



142 **Tempo I°**

205 **Poco meno**

rall.

II. Salsa

218 **Allegretto senza fretta**

230

(Double Bass)

[illegible]

242 (play)

First staff of music, featuring a treble clef, a key signature of one flat (B-flat), and a 4/4 time signature. The melody consists of eighth and quarter notes, with a mezzo-forte (*mp*) dynamic marking.

250

258

266

6

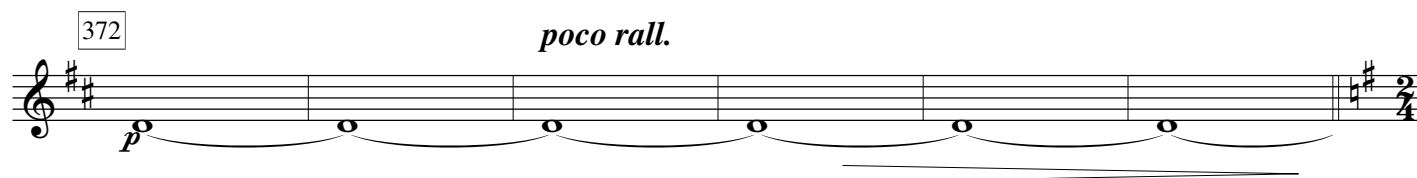
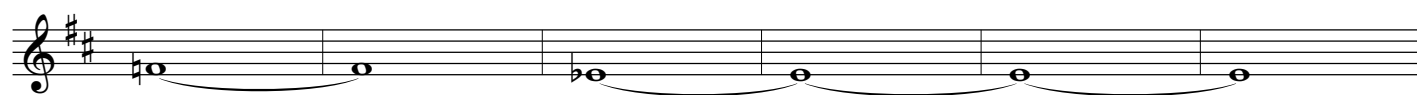
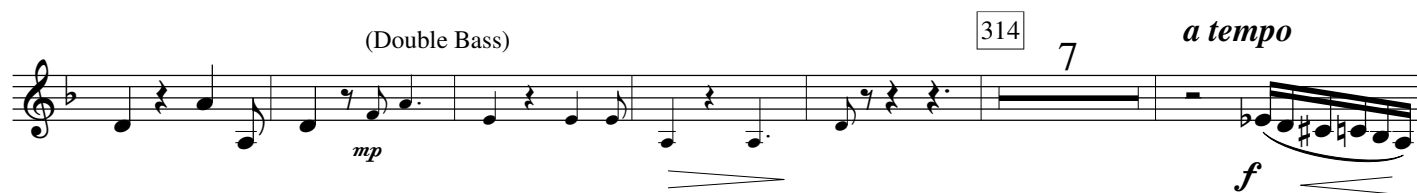
274

282

11

294

The first staff of music contains measures 1 through 11. The notation includes various note values, rests, and a dynamic marking of *mf* at the end.



378 **Vivace**

III. Merengue



CARIBBEAN SYMPHONETTE - 6 | E♭ TUBA

386 394

mf *f*

402

410

ff *mf*

418

mf

426

f

434

ff *mf*

442

f

451

f

459

f

Detailed description: This image shows a page of a musical score for 'The Swan' by Camille Saint-Saëns. The score is written for a single melodic line on a grand staff (treble clef). The key signature is one sharp (F#), and the time signature is 4/4. The page contains measures 386 through 459. The music is characterized by a series of eighth and sixteenth notes, often with grace notes, creating a flowing, lyrical melody. Dynamic markings include *mf* (mezzo-forte), *f* (forte), *ff* (fortissimo), and *mf* (mezzo-forte). There are also crescendo and decrescendo hairpins. Measure numbers are placed in boxes above the staff at intervals of 18 measures (386, 394, 402, 410, 418, 426, 434, 442, 451, 459). The notation includes various ornaments like grace notes and accents.

467

f

475

ff

483 **Quasi Habanera**
two players

ff *p*

491

p

499 **Più lento**
one player only

p

506 **Tempo I**
all players

rall. *ff* *mf*

515

f

523

ff

ff *sfz* *sfz*