

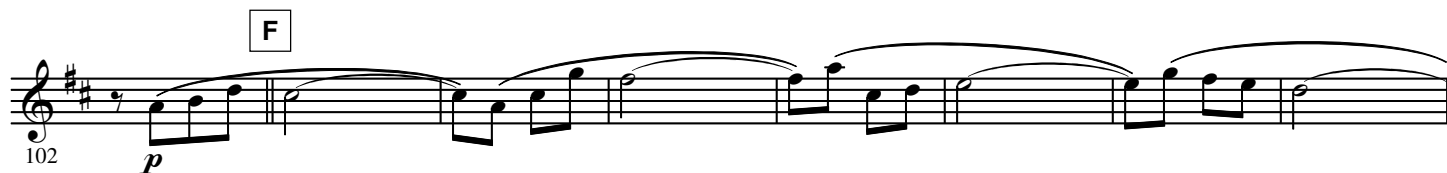
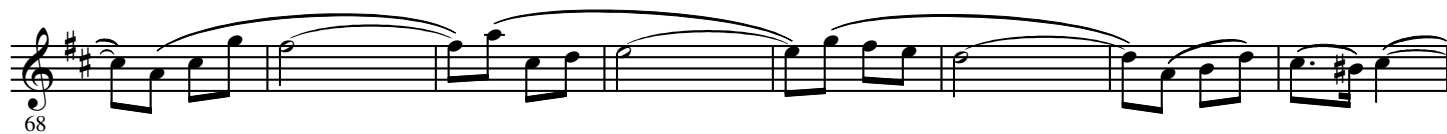
THE PEANUT POLKA

B \flat Trombone 3

Robert FARNON

Arr. Jean-Pierre HAECK

Allegro Polka



118 **G**

Staff 118-125: Treble clef, key of D major (two sharps). Measure 118 starts with a forte (*f*) dynamic and contains sixteenth-note triplets. Measure 119 has a key signature change to E major (three sharps). Measures 120-125 feature a descending melodic line with various articulations and a final half-note chord.

126

Staff 126-134: Continuation of the melodic line from the previous staff, featuring eighth-note patterns and a final half-note chord.

135 **H** 16 **I** 2

Staff 135-158: Treble clef, key of E major. Measure 135 starts with a forte (*f*) dynamic and contains a 16-measure rest. Measure 136 begins with a new melodic phrase. Measure 158 ends with a 2-measure rest.

159 *mf*

Staff 159-166: Continuation of the melodic line, starting with a mezzo-forte (*mf*) dynamic. The staff contains eighth-note patterns and rests.

167 **J** 2 *f* *f* *sfp* *f*

Staff 167-175: Continuation of the melodic line. Measure 167 starts with a 2-measure rest and a forte (*f*) dynamic. Measure 170 features a forte (*f*) dynamic, a sforzando (*sfp*) dynamic, and another forte (*f*) dynamic.

176 *ff*

Staff 176-183: Continuation of the melodic line. Measure 176 starts with a fortissimo (*ff*) dynamic and features a descending melodic line with various articulations.